

TEG-S16G SWITCH

Overview

The TRENDnet TEG-S16g is a 16-port unmanaged Gigabit Ethernet switch designed for high-performance networking with energy efficiency. It features 16 auto-MDIX 10/100/1000 Mbps ports, delivering a total switching capacity of 32 Gbps. The switch incorporates GREENnet technology, which reduces power consumption by up to 70% by automatically adjusting power usage based on port activity, device status, and cable length.

QUICK SPEC

FIGURE 1: APPEARANCE OF TEG-S16G



TABLE 1: QUICK SPECS

SKU	TEG-S16G
Data rate	Ethernet: 10Mbps/20Mbps (half/full-duplex) Fast Ethernet: 100Mbps/200Mbps (half/full-duplex) Gigabit Ethernet: 2000Mbps (full-duplex)
Ports	16 x 10/100/1000Mbps Auto-MDIX RJ-45 ports
Dimensions (W x H x D)	40 x 140 x 45 mm (17.3 x 5.5 x 1.8 in.)

Product Details

FIGURE 2 : FRONT PANEL OF TEG-S16G

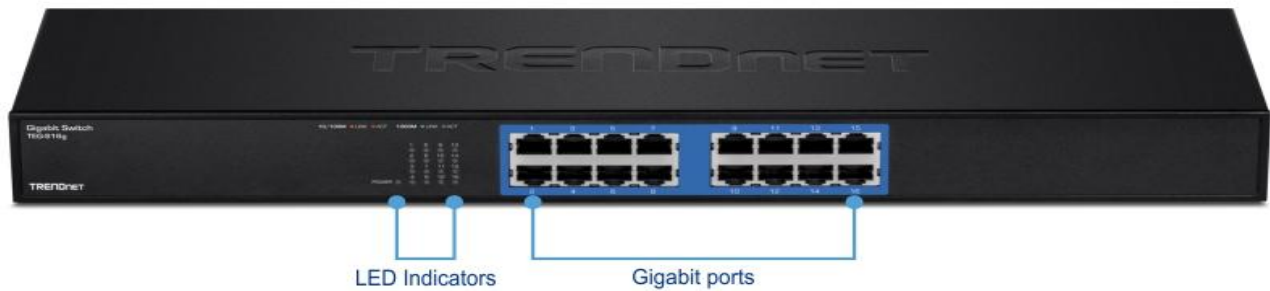


FIGURE 3 : BACK PANEL OF TEG-S16G



TEG-S16G Switch provides these features:

1. 16 x 10/100/1000 Mbps Auto-MDIX Gigabit Ethernet Ports

These ports support high-speed Gigabit Ethernet connections and automatically adjust for straight or crossover cables, simplifying installation.

2. GREENnet Technology

This feature reduces power consumption up to 70% by adapting power usage based on port activity, cable length, and connected device status, resulting in significant energy savings.

3. 3.32 Gbps Forwarding Capacity:

High switching capacity ensures steady, non-blocking wire-speed transmission of data across all ports, eliminating bottlenecks.

4.Internal Universal Power Supply:

Compact internal power supply reduces external cable clutter and supports a wide input voltage range (100-240V AC), facilitating global usage without additional adapters.

5.Fanless Metal Housing:

The sturdy metal chassis provides durability, while the fanless design ensures silent operation, ideal for noise-sensitive environments.

6.Jumbo Frame Support (Up to 9,216 Bytes):

Allow the switch to handle larger data packets, which improves network efficiency by reducing overhead for large file transfers.

7.On/Off Power Switch:

This convenient feature allows easy manual control to power the switch on or off, which helps save energy when the device is not in use.

SPECIFICATION

TEG-S16G (16-Port Gigabit GREENnet) Switch Specification	
MODEL NUMBER	TEG-S16G
STANDARDS	IEEE 802.3 10Base-T; IEEE 802.3u 100Base-TX IEEE 802.3ab 1000Base-T; IEEE 802.3x Flow Control;
NETWORK MEDIA	Ethernet: Cat. 5 up to 100 m Fast Ethernet: Cat. 5 and 5e up to 100 m Gigabit Ethernet: Cat. 5e and 6 up to 100 m
DATA RATE	Ethernet: 10Mbps/20Mbps (half/full-duplex) Fast Ethernet: 100Mbps/200Mbps (half/full-duplex) Gigabit Ethernet: 2000Mbps (full-duplex)
PROTOCOL / TOPOLOGY	CSMA /CD, Star
WEIGHT	1.6 kg (3.5 lbs.)
DIMENSIONS (W x H x D)	440 x 140 x 45 mm (17.3 x 5.5 x 1.8 in.)
INTERFACE	16 x 10/100/1000Mbps Auto-MDIX RJ-45 ports
POWER BUTTON	On / off power button
POWER	100 to 240VAC, 50/60Hz Internal universal switching power
DIAGNOSTIC LED	Power, Link/ACT, 100Mbps, 1000Mbps

DATA RAM BUFFER	2MBits
FILTERING TABLE	8K entries
JUMBO FRAME SUPPORT	Up to 9216Bytes
OPERATING TEMPERATURE	0° C to 40° C
STORAGE TEMPERATURE	-10° to 70° C
HUMIDITY	Max. 90% (non-condensing)
POWER CONSUMPTIONS	7.2 Watts (max.) IEEE 802.3x Flow Control for full-duplex mode • Back pressure Flow Control for half-duplex mode
SWITCHING CAPABILITIES	32 Gbps
CERTIFICATIONS	CE, FCC

Why Insight Infosys.com

We design and deploy full-stack ICT architectures — from edge to core, on-prem to cloud with a focus on networking, virtualization, cloud services, and cybersecurity services.

Since 2010, we have build partnership with with global leaders like:

**Cisco - Juniper - Mitrotik - Cambium - Fortinet - SonicWall - PaloAlto -
Sophos - Aruba - Ubiquiti - Mimosa**

What Sets Us Apart:



**1500 +
Completed
Projects**



**250 +
Trusted
Clients**



**Partners
With Global Leading
Tech Vendors**



**Competitive
Affordable
Pricing**



**24/7
Tech
Support**

CONTACT US

Insight Technology Pvt. Ltd.

Email: care@insightinfosys.com

Phone: +977 1 5268730 , 9801148543

Address : Steel Tower, Jawalakhel, Lalitpur