

C1300-24P-4G SWITCH

Overview

The Cisco C1200-24T-4G is a smart managed switch designed for small to medium-sized businesses, offering 24 Gigabit Ethernet ports and 4 Gigabit SFP uplinks. It provides high-performance, reliable connectivity with advanced security features and energy-efficient design. The fanless, rack-mountable form factor makes it ideal for quiet office environments, while simplified management via Cisco Business Dashboard and zero-touch deployment enhance operational efficiency.

QUICK SPEC

FIGURE 1: APPEARANCE OF C1300-24P-4G



TABLE 1: Quick Specs

SKU	C1300-24P-4G
Backplane speed	56 Gbps
Data rate	41.66 million packets per second (mpps)
Throughput	41.66 mpps at 64-byte pa
Ports	28 (24 x Gigabit Ethernet+4 x SFP)
Dimensions (W x H x D)	445 x 299 x 44 mm (17.5 x 11.77 x 1.73 in)

FIGURE 2: FRONT PANEL OF C1300-24P-4G

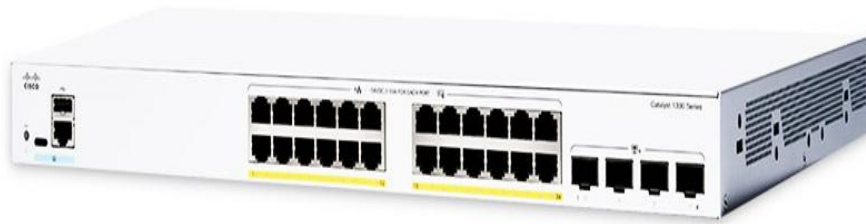


FIGURE 3: BACK PANEL OF C1300-24P-4G



C1300-24P-4G Switch provides these features

1.Ease of management and deployment

The C1300-24P-4G switch is designed to be easy to use and manage by commercial customers or the partners that serve them. The Cisco Network Plug and Play solution provides a simple, secure, unified, and integrated offering to ease new device rollouts or for provisioning updates to an existing network. The solution provides a unified approach to provisioning Cisco routers, switches, and wireless devices with a near-zero-touch deployment experience.

2.Power Efficiency

The C1300-24P-4G switch is highly energy-efficient that support the IEEE 802.3az Energy Efficient Ethernet standard, which lowers power use by putting links into sleep mode during idle times. The switches automatically shut off power on ports when the link is down and intelligently adjust signal strength based on cable length to optimize power consumption. This switch also features a fanless design, which reduces energy usage, increases hardware reliability, and ensures quieter operation suitable for office environments. These features collectively provide an eco-friendly network solution that supports sustainability goals and cost savings.

3. Advanced Layer 3 traffic management

This offers advanced Layer 3 traffic management features that enable more efficient network organization for growing networks and expanding branch offices. It support dynamic Layer 3 routing, allowing segmentation of the network into workgroups and seamless communication across VLANs without compromising application performance. It offloads internal traffic management from the router and the the switch improves network efficiency by allowing the router to focus primarily on external traffic and security, enhancing overall performance and scalability.

4.Compact design

It features a sleek and compact design, providing great deployment flexibility.This design supports seamless integration into diverse settings without compromising on performance or aesthetics.

SPECIFICATION

Model	C1300-24P-4G
Unit weight	3.53 kg (7.78 lb)
Dimensions	445 x 299 x 44 mm (17.5 x 11.77 x 1.73 in)
Capacity in millions of packets per second (mpps) (64-byte packets)	41.66
Switching capacity in gigabits per second (Gbps)	56.0
System power consumption	110V=27.1W 220V=27.5W
Heat dissipation (BTU/hr)	795.2
Idle Power	110V=13.9W 220V=12.9W
Power consumption (with PoE)	195W
Number of ports that support PoE	24

Total system ports	28 x Gigabit Ethernet
RJ-45 ports	24 x Gigabit Ethernet
Combo ports (RJ-45 + [SFP])	4 x SFP
Console port	Cisco standard RJ-45 console port and USB Type C port
USB port	USB Type C port on the front panel of the switch for easy file and image management as well as console port
Buttons	Reset button
Cabling type	Unshielded Twisted Pair (UTP) Category 5e or better for 1000BASE-T
Flash	512 MB
LEDs	System, Link/Act, PoE, Speed
CPU	ARM dual-core at 1.4 GHz
DRAM	1 GB DDR4
Packet buffer	1.5 MB
Power	100-240V 50-60 Hz, internal, universal
Operating temperature	23° to 122°F (-5° to 50°C)
Storage temperature	-13° to 158°F (-25° to 70°C)
Operating humidity	10% to 90%, relative, noncondensing
Storage humidity	10% to 90%, relative, noncondensing
Fan	Fanless
Certifications	UL (UL 62368), CSA (CSA 22.2), CE mark, FCC Part 15 (CFR 47) Class A
Package contents	Power cord (power adapter for select 8-port SKUs)



	Mounting kit (Only 24-and 48-port models include the 19-in mounting brackets with the switch) CcPointer card
--	---------------------------------------------------------------------------------------------------------------------

Why Insight Infosys.com

We design and deploy full-stack ICT architectures – from edge to core, on-prem to cloud with a focus on networking, virtualization, cloud services, and cybersecurity services.

Since 2010, we have built partnerships with global leaders like:

Cisco - Juniper - MikroTik - Cambium - Fortinet - SonicWall - Palo Alto - Sophos - Aruba - Ubiquiti - Mimosa

What Sets Us Apart:



**1500 +
Completed
Projects**



**250 +
Trusted
Clients**



**Partners
With Global Leading
Tech Vendors**



**Competitive
Affordable
Pricing**



**24/7
Tech
Support**

CONTACT US

Insight Technology Pvt. Ltd.

Email: care@insightinfosys.com

Phone: +977 1 5268730, 9801148543

Address: Steel Tower, Jawalakhel, Lalitpur